

60HZ



0.5~1HP



2~3HP



5~7.5HP



10~15HP

Features

- Non-clogging impeller minimizes abrasives wear and allows large solid passage.
- Dry motor with overload protector; Cable with an epoxy resin sealed water-proof cable hood; Use deep groove C3 bearing to extend life time.
- Superior abrasion resistant double mechanical seal to ensure best seal effect.
- Oil seal mounted outside of seal chamber stops solids gathering around seal faces.

Motor Spec.

- 2P dry type motor.
- Insulation: F class.
- Protection: IP68.
- Frequency: 60HZ
- Voltage: 1 ϕ 110~220V(0.5~2HP)
3 ϕ 220~660V(all models)



EF Vortex Impeller

Parts and Materials List

No.	Parts	Std. Material
		EF Model
1	Cable	VCT
2	Cable hood	PVC
3	Handle	Nylon6 or SS400
4	Motor cover	Nylon66 or FC200
5	Seal housing	FC200
6	Bracket	FC200
7	Oil chamber	FC200
8	Pump casing	FC200
9	Impeller	FC200
10	Nut	SUS304
11	Mech. seal	CA/CE
12	Oil seal	NBR
13	Bearing	(NTN or NSK brand)
14	Overload protector	(T.I.brand)
15	Shaft	SUS410
16	Motor housing	SUS304
17	Lubricant oil	(Turbine Oil ISO VG46)

• Mech.seal (sic/sic)material is optional upon request.

Applications

- Waste water drainage from all industries.
- Sewage drainage from hotels, restaurants, schools, malls, and public facilities.
- Fishery, animal husbandry, stock farm, piggery, fecal sewage tank in waste water treatment plant.
- Drainage of waste water containing fibrous additives from leather factory, dyeing factory and food processing factory.

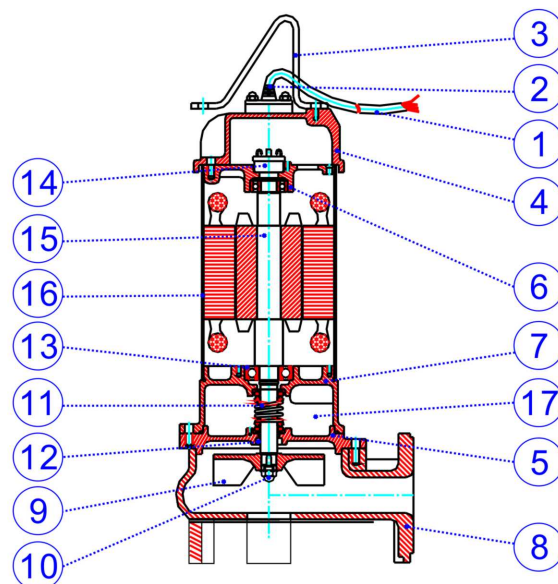
Optional

Sub. pump with guide rail device is available.



Optional

Single phase sub. pump equipped with auto float switch. (0.5HP~2HP)



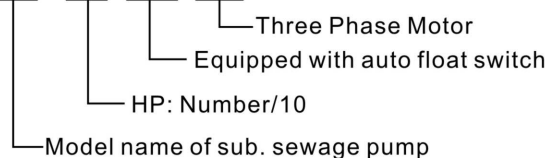
60HZ

Operating Conditions

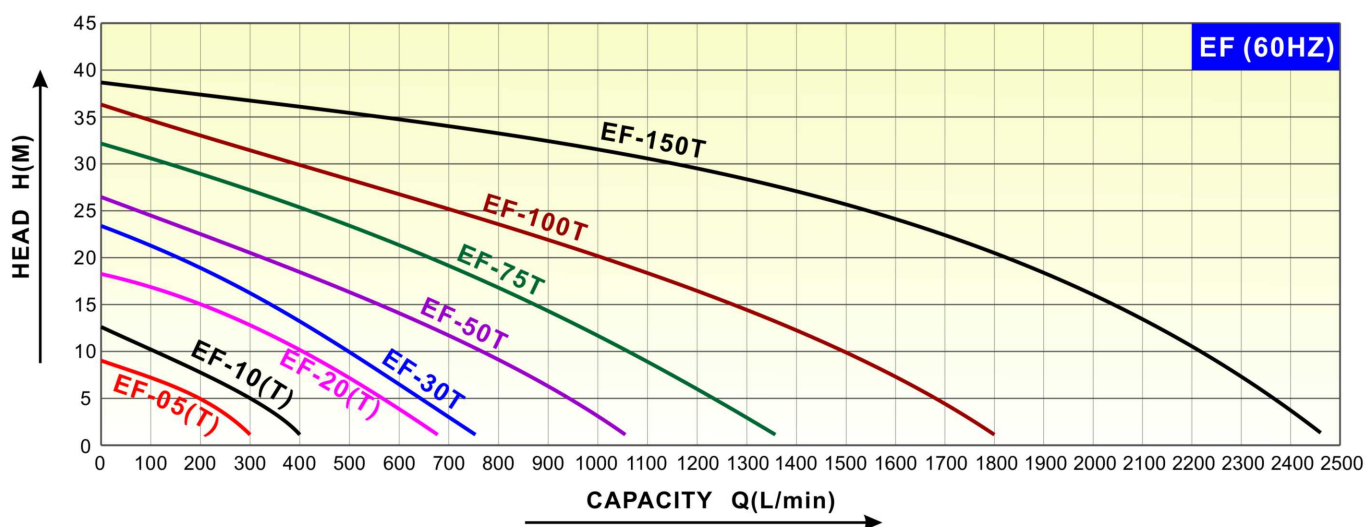
- Water temperature: 0~40°C.
- Ambient temperature: 0~40°C.
- Solid passage: 35~50MM.
- Operating water depth: 8~10M.
- No use in sea water.
- No 24hrs continuously running.

Model Code

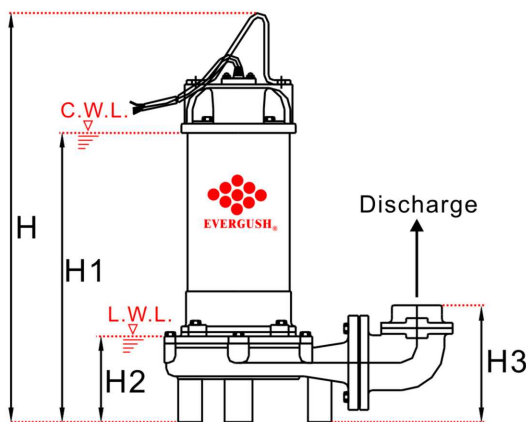
EF-20(A)(T)



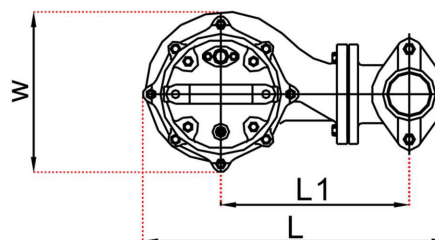
Performance Curves



Specification & Dimensions



NOTE: Forbid running submersible pumps continuously under L.W.L.



C.W.L.: Continously Running Water Level.
L.W.L.: Lowest Running Water Level.

Model	Power		Disch. Inch	Phase φ	Rated		Max.		Dimensions (mm)						Cable M	Net Weight KG	Solid Passage MM	
	KW	HP			Head M	Capacity LPM	Head M	Cap. LPM	L	L1	W	H	H1	H2				H3
EF-05(A)(T)	0.37	0.5	2"	1,3	5~6	200~150	9	300	222	115	145	410	297	113	133	5	13	35
EF-10(A)(T)	0.75	1	2"	1,3	6~8	250~220	12	400	222	115	149	464	340	113	133	5	18	35
EF-20(A)(T)	1.5	2	2"(3")	1,3	10~12	400~350	18	680	387	234	208	548	400	122	153	5	33	35
EF-30T	2.2	3	2"(3")	3	10~15	500~350	23	750	387	234	208	568	420	122	153	5	35	35
EF-50T	3.7	5	3"(4")	3	15~18	550~400	26	1050	459	256	227	638	471	160	220	5	55	50
EF-75T	5.5	7.5	3"(4")	3	15~19	880~700	32	1350	459	256	227	678	511	160	220	5	61	50
EF-100T	7.5	10	4"	3	18~20	1100~1000	36	1800	550	280	310	680	511	210	250	10	87	50
EF-150T	11	15	4"	3	16~25	2000~1550	38	2500	560	310	310	730	580	250	310	10	110	50

Remarks: ●(A): Equipped with automatic float switch. ●(T): Three phase motor. ●10M cable are available for 0.5~7.5HP models per special request.